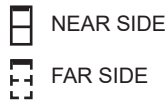
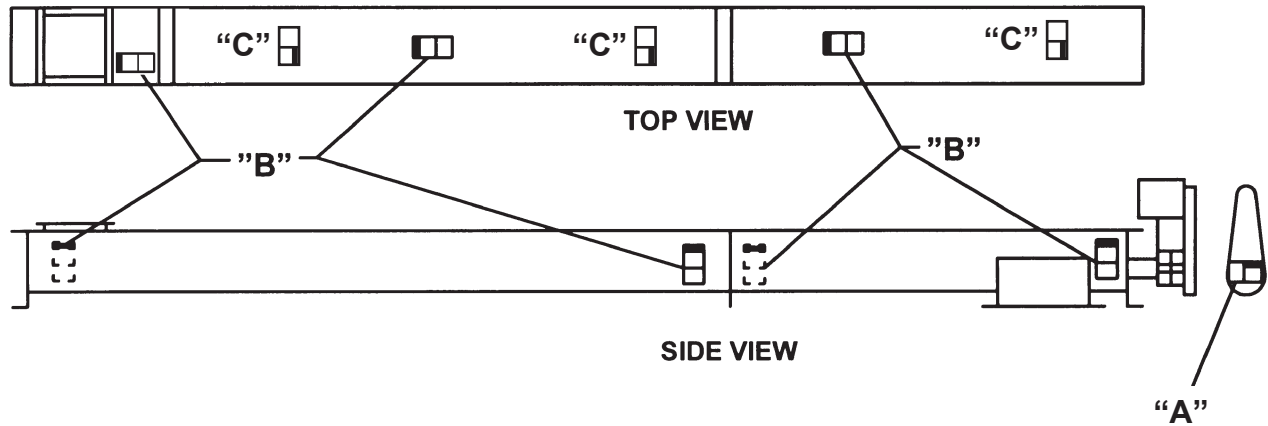


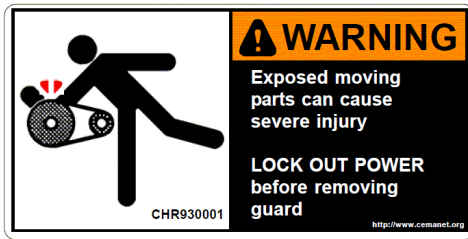
CEMA Safety Labels Placement Guidelines

Product: Bulk Handling Equipment

Equipment: Screw Conveyors (SC-2)



Use Label "A" on belt guard.
 Use Label "B" on ends of trough, middle of covers, and at inlet opening.
 Use Label "C" on top of covers.



"A"

To be placed on removable guards to warn that operation of the machinery with guards removed would expose chains, belts, gears, shafts, pulleys, couplings, etc. which create hazards.



"C"

To be placed on inlets and discharges, troughs, covers, and inspection doors of screw conveyors to provide warning against exposed moving parts while in operation



"B"

To be placed on inlets and discharges, troughs, covers, and inspection doors of screw conveyors to provide warning against exposed moving parts while in operation