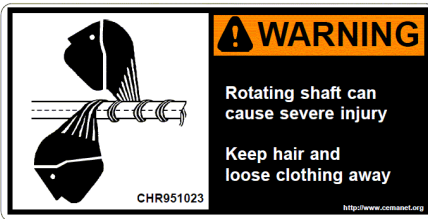
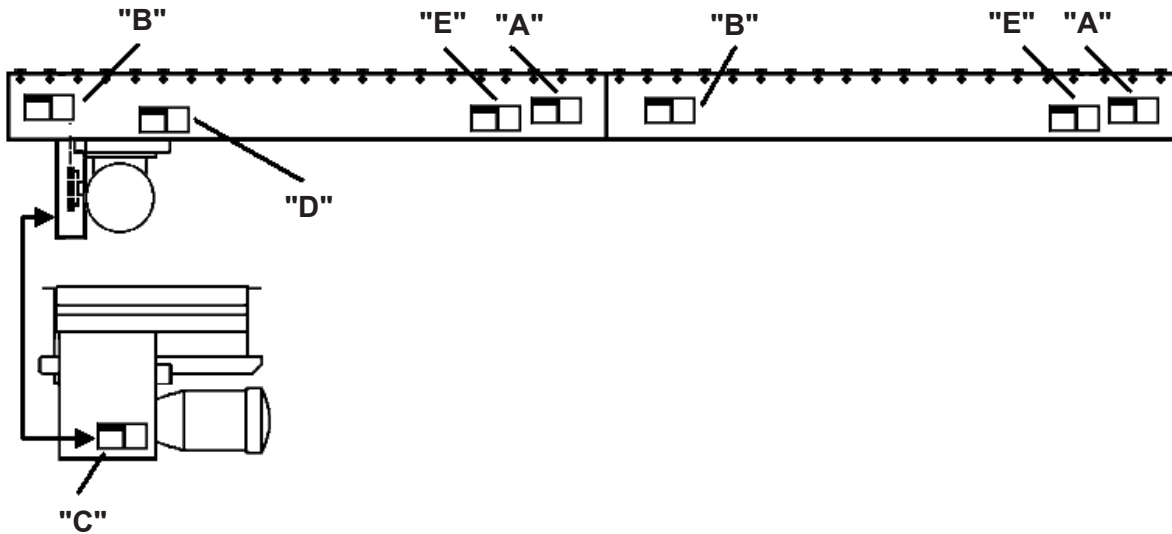


# CEMA Safety Labels Placement Guidelines

Product: Unit Handling Equipment

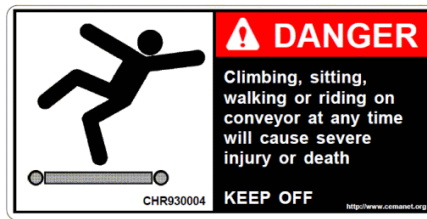
Equipment: Lineshaft Conveyors (UH-7)



**"A"**

(SPACE UP TO A MAXIMUM OF 20 ft CENTERS (BOTH SIDES))

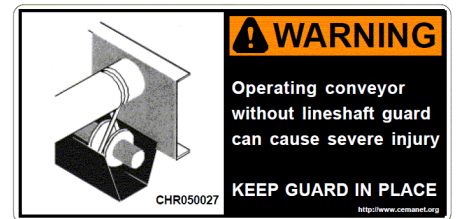
General warning to personnel that lineshaft conveyors use a rotating shaft which may be hazardous if hair or loose clothing becomes entangled around the lineshaft. Also used on any other conveyors where the exposed shaft may create similarly hazardous conditions.



**"B"**

(SPACE UP TO A MAXIMUM OF 20 ft CENTERS (BOTH SIDES))

To be placed along both sides of these conveyors since these conveyors provide surfaces and profiles attractive, but hazardous, for climbing, sitting, walking, or riding.



**"E"**

(LOCATE NEAR LINESHAFT GUARDS (BUT NOT ON GUARD))

General warning to personnel, used in conjunction with label A, to alert them that an exposed lineshaft may create a hazard, and that a guard was supplied that should be in place while the equipment is operated. If operated without the guard in place, the mechanism can grab body members, clothing, and hair.



**"C"**

(LOCATE ON DRIVE GUARDS AND CHAIN/BELT GUARDS)

To be placed on removable guards to warn that operation of the machinery with guards removed would expose chains, belts, gears, shafts, pulleys, couplings, etc. which create hazards



**"D"**

(LOCATE ON DRIVE SECTION (BOTH SIDES))

General purpose label to warn maintenance personnel that conveyors should be shut off and locked out prior to servicing. Examples: drives, takeups, lubrication points which require guard removal.