

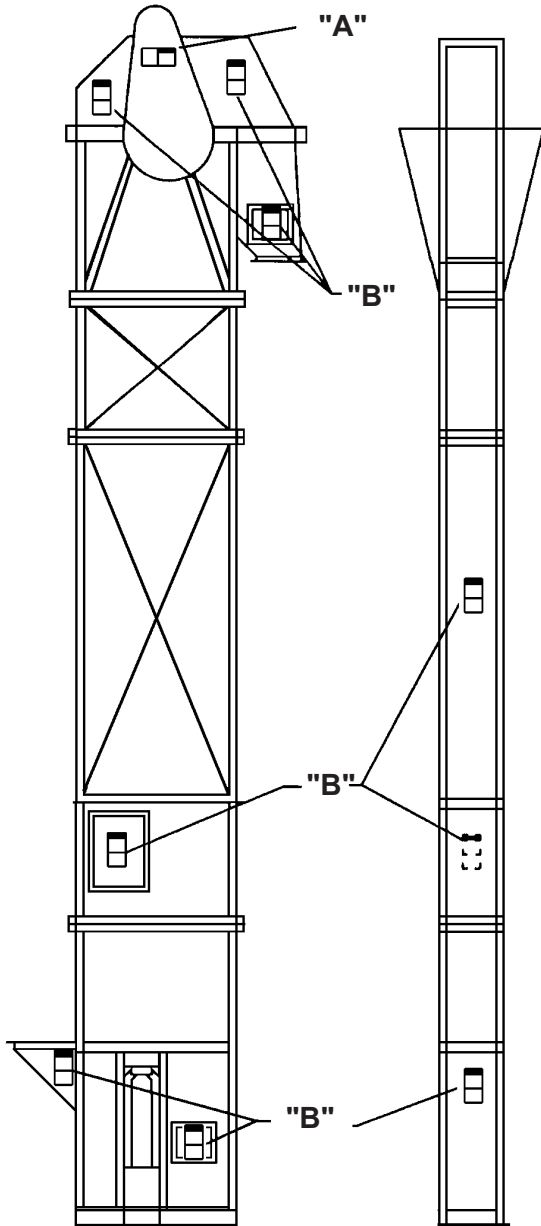
# CEMA Safety Labels Placement Guidelines



Product: Bulk Handling Equipment

Equipment: Bucket Conveyors (SC-4)



Use Label "A" on belt guard.  
 Use Label "B" on each side of intake, all bolted panels and inspections doors, and both sides of split hood.

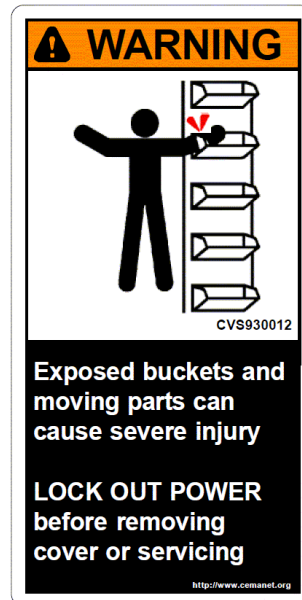


-  NEAR SIDE
-  FAR SIDE



"A"

To be placed on removable guards to warn that operation of the machinery with guards removed would expose chains, belts, gears, shafts, pulleys, couplings, etc. which create hazards.



"B"

To be placed on intakes, bolted guards and panels, hoods and doors of bucket conveyors to provide warning against exposing buckets and moving parts while in operation